

# News & Notes

*Connecting People to Christ the Vine  
And Keeping them Connected*

**Bethany's Purpose Statement**—The Church's mission is to build herself up in faith and love, connecting more and more of fallen humanity to Christ, to the praise and glory of God, by and for the transmission of the forgiveness of sins, life and salvation through the Holy Gospel and sacraments of Christ and to keep her members connected to Christ through the same.



## Welcome August 23, 2009 Twelfth Sunday after Pentecost

On behalf of the family of Bethany Lutheran Church & School, we welcome our members and especially our guests and visitors in the name of Jesus Christ, our Risen Savior. If you are a visitor to Bethany, we ask you to fill out the yellow guest registration card in the pew rack. **We also invite our visitors to stop by our welcome center** in the Narthex for an information packet about our church.

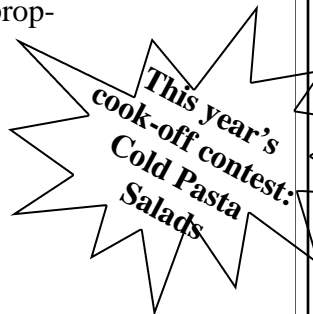
## Church and School Picnic is Next Week!

If you like brats, burgers, potluck dishes and a chance to mingle with old and new friends, come to the annual church and school picnic next week.



The picnic begins at 12:30 p.m. Come and enjoy food and fellowship on our property. Please bring the following:

- O—Last name A-J dessert to serve 10-12
- O—Last name K-R cold side dish to serve 10-12
- O—Last name S-Z hot side dish to serve 10-12
- O—Beverage for you and your family
- O—Blanket and chairs



## Other Happenings at Bethany on August 30

- We will have all three worship services on Sunday, August 30.
- At the 9 a.m. service we will dedicate our Sunday School Teachers and gift Bibles to our 3<sup>rd</sup> grade Sunday School students.
- At 10:15 all classes begin. This includes Sunday School for children, High School Bible Class, Adult Bible Study and Catechumenate classes for those who want to learn about the Lutheran faith. Orientation classes, for new members who are transferring to Bethany, will also take place at 10:15 on August 30 (in addition to 8/25, 9/13 & 9/20).

## The Six Chief Duties of the Church

Drawn from Scripture and Recorded in C.F.W. Walther's Book: *The Proper Form of the Christian Congregation*

**Duty 1 - See to it that the Word of God Dwells Richly in your Midst**  
(Colossians 3:16)

**Duty 2 - Keep the Gospel Pure and Practice Church Discipline**  
(Romans 16:17)

**Duty 3 - Look after the Temporal Needs of the Church Members**  
(Galatians 6:10)

**Duty 4 - Do all Things in Good Order**  
(1 Corinthians 14:33)

**Duty 5 - Band Together with Other Right Teaching Churches (Synod)**  
(Ephesians 4:3)

**Duty 6 - Expand the Kingdom of Christ (Missions and Evangelism)**  
(Amos 6:6)

## Calendar

DATE	TIME	DESCRIPTION
Sunday 08/23	7:45AM 9:00  11:15 12:15PM	Matins no/communion Divine Service w/communion No Sunday School classes Matins no/communion Mike Vasilie Installation/BLS Teacher Rededication Mike Vasilie Reception—MPR
Monday 08/24	8:30AM 8:50 6:45 to 8:00PM 7:30 to 9:00	BLS First Day of School BLS Opening Chapel Service—Sanctuary Praises Ring—Sanctuary Voters Board—Conf Rm
Tuesday 08/25		
Wednesday 08/26	3:35 to 4:25PM 4:00 to 8:00 7:00 to 9:00	Schola—Sanctuary Fort Wayne Recruitment—Conf Rm BLS PreK—5th Grade Parents Night
Thursday 08/27	7:00 to 9:00PM	BLS Jr. High Parent Night
Friday 08/28		
Saturday 08/29	7:00 to 10:00AM 5:00PM	Saturday Morning Men's Basketball—PAC Vespers no/communion
Sunday 08/30	7:45AM 9:00 10:15  11:15 12:30PM	Matins no/communion Divine Service w/communion Sunday School, High School, Adult, Catechumenate Classes Divine Service w/communion Church and School Picnic

## Bethany Summaries

Date	Attendance	Unified Offering	Budgeted Contributions
7/19	409	\$11,258	\$17,929
7/26	381	\$9,479	\$17,929
8/02	389	\$18,498	\$13,863
8/09	461	\$12,347	\$13,863
8/16	485	\$11,238	\$13,863

**Monthly Simply Giving Auto Withdrawal Receipts—\$3,353 (not included in above).**



OTHERS TALK, WE HAVE SOMETHING TO SAY...Issues, Etc. is a radio talk show produced by Lutheran Public Radio and hosted by LCMS Pastor Todd Wilken. Topics include: Teaching a Sunday School Lesson, Early Marriage, Islamic Sects, Religion & Politics, the ELCA Churchwide Assembly and more. You can listen to what you want when you want at [www.issuesetc.org](http://www.issuesetc.org).

## Christ Lutheran Academy



For information and questions about CLA call the school office at 815-487-4140 from 8:00 a.m. to 12 noon Monday through Friday or visit our website [www.CLA-Plainfield.org](http://www.CLA-Plainfield.org).

## Pictorial Directory is Coming this Fall



Bethany is planning a new Pictorial Directory this fall. We have reserved November 17 to 21, November 23/24 and 27/28 for picture taking. If you are planning a family photo for a gift, we have been guaranteed delivery for Christmas. Watch upcoming News & Notes for more information.

### Extra Directories Available

Copies of our most current non-pictorial membership directory are available to members at the Welcome Center. Please ask the Welcome Center volunteer for a copy.

## In Our Prayers (as of 08/20/09)



**All of our Members, especially:** Louise Bolt, cancer treatments; Lauri Faybik, illness; Esther Gehrs, recovery from fall; Eleanor Kerth, cancer; Brian Rost, ill; Bill Schoen, ill health; Marge Staffeldt, recovery from cataract surgery; Glenn Volkmann, ill health; Ray and Peg Van Ham, ill health; Ed Warner, ill health; (*please renew/update prayer requests after four weeks*)

**All of our Family Members & Friends, especially:** Sandy Anderson, (friend of Glenn Sonlitner) cancer treatments; Katie Beres, (niece of Brian and Sheril Hagie) cancer/chemo treatments; Suzanne Brandenburg & Laura Parker (sisters and friends of the Pilgrim family) fighting breast cancer; Anne Broggi, (mother of Mike Broggi) hospice care; Terry Gallagher, (friend of David Brouch) cancer/chemo treatments; Melody Haas, (friend of the Cummuta family), 6 months pregnancy/in coma—that her and baby's health be restored; Connie Koenig, (relative of Tim Gutzwiller) ill health; Marj Koenig, (aunt of Tim Gutzwiller) cancer; Laurence Luehrsen, (father of Glenn Luehrsen) cancer treatments; Caitlan McClain, (friend of the Gutzwiller family) for good biopsy results; Arthea Paulos, (sister of Dave Buckman) suffering from ALS/cancer; George Pierce, (friend of Joel and Mary Burke) cancer; Betty Smith & Lucy Dalton, (caregivers of Beth Purpur) recovery from car accident; Denice Spire, (friend of the Westpfahl family) anticipating surgery on 9/1; Lori Van Aacken, (niece of Jennifer Kroneman) recovery from broken foot; (*please renew/update prayer requests after two weeks*).

## Worship At Bethany

Does Bethany offer contemporary worship? Does Bethany have traditional services? Worship at Bethany is both - and neither. Like many parishes, Bethany seeks to unite God's family in worship that rises above stylistic preferences.

Christian worship begins with the crucified Christ, who comes to us in Word and Sacrament. He brings to the people of God forgiveness of sins, life, and salvation. We in turn extol these gifts with joyful thanksgiving and praise, proclaiming the story of God's love through His Word. This celebration is done in concert with the Church throughout the world, and finds its expression in the liturgy. Lutheran worship is therefore traditional in that it is part of the timeless culture of the Church, and contemporary in that it communicates the Gospel in ways that are appropriate to a given place and time. Since worship is the vocation of all baptized Christians, Lutheran liturgy calls for all individuals to do their parts, that faith may be increased among all who worship, and that Christ may be most strongly confessed before the world.

Providing worship that achieves these noble ends is the responsibility of any Christian congregation. Continuing in the tradition of the evangelical Lutheran communion, the Divine Service at Bethany seeks therefore to involve all who gather in the name of the Lord in the proclaiming, confessing, singing, and praying of God's Word.

## Military Prayers

All men and women serving in the military, especially Nathan Awis, Sean Benson, Kurt Bevente, Clint Burnell, Tracey Collins, Sean Haggerty, Luke Harms, Jim Heim, Matthew Hinze, Peter Johnson, Michael Kato, Ryan Killacky, Jeremy Klinger, Jim Kolzow, Joe Krefft, Christopher Lee, Matt Nelson, Jason Skeen, Nicholas Camm Williams, Joshua Zyskowski.

**Prayer Chain Requests:** Please call Marlene Elder at 630-961-1095 or Gertrude Bartha at 630-355-4871.

**There will be no Sunday School today.  
Rally Day is August 30.**

# Bible Study Page

## Youth

*"They devoted themselves to the apostles teaching and they ate together with glad and sincere hearts" Acts 2:42,46*



### ROCK Pool Party!

ROCK will be having a pool party on Saturday, August 29 from 6 to 8 p.m. at **Maplebrook I pool**. Cost is \$5. Sign up by Tuesday. The pool is easy to get to (north from church on Moadaff, go through the light at 75th St. Take the first right (Tupelo). Pool is at the end of Tupelo).

Remember we need to get a count to the pool for lifeguarding purposes ASAP. Snacks will be provided.



### Attention Koinonia & Oasis Here's What's Happening This Year

Koinonia (4th/5th grades) and Oasis (6th/7th/8th grades). Koinonia meets from 6-7:30 p.m. Oasis meets from 7:30 to 9:00 p.m.

**September 5**—Fall Kick Off—Wacky Water Games

**October 2**—Pumpkin Decorating (bring a pumpkin!)

**November 6**—Card Sharks

**December 4**—Christmas Party

**January 8**—Balloon Mania

**February 5**—Movie Night (both groups 7:00-9:00)

**March 5**—Bingo (with prizes!!)

**April 9**—Not So Trivial Trivia

**May 14**—Pizza Party/Open Gym

## Parish Education Opportunities

*"They devoted themselves to the apostles teaching." Acts 2:42*

### All Sunday Classes begin at 10:15 a.m.

**Sunday School, Adult Bible Study and High School Bible Study will resume next week, August 30.**

### Sunday School-Patty Pedigo, SS Superintendent

There is no Sunday School today. We resume on Rally Day, Sunday, August 30.

### High School Bible Study

There are no class today. Class resumes next Sunday.

### Weekday Bible Classes

#### Tuesday Evening Teachings of the Lutheran Church

Pastor Rossow's class on the Teachings of the Lutheran Church and the Scriptures will resume in September.

#### Wednesday Morning Bible Study

This class is in recess for the summer.

### Wednesday Evening LifeLight

Both branches of the Wednesday evening Lifelight Bible study will resume in fall

### LifeLight for Women

Women's Friday Morning Lifelight is on break for the summer and will resume on August 28.

### Saturday Men's Bible Breakfast

Pastor Schumacher teaches a Bible Study the 1st and 3rd Saturday of each month in the multi-purpose room at 7:30 a.m. See page 6 for more information. All men are welcome.

### LWML Bible Study

LWML Bible Study is on break for the summer.

# Ministry Pages

## Day School

*“They devoted themselves to the apostles’ teaching.” Acts 2:42*

### *The Role of Our School*

*We are committed to connecting children to Christ and keeping them connected to Him through education, and so we operate a Pre-K through 8th grade school. Our school is a major priority for us, along with preaching and teaching the Word in our regular services.*

#### **Theme for the 2009-10 School Year**

**“Keep Your Eyes on the Goal”**

**“I press on toward the goal, to win the prize for which God has called me heavenward in Christ Jesus.”**

**Philippians 3:14**

### **School Bell Rings on Monday**

Teachers and staff are awaiting the smiling faces of students returning to school on Monday. The day begins at 8:40 a.m. with our first chapel service. We are starting the new school year with 259 students enrolled Preschool through 8<sup>th</sup> and a staff of 22, including 11 full time teachers, 4 part time aids, and 7 specials (music, art, P.E., etc.). Our 4<sup>th</sup> grade class is full, but we still have room in most others grades. Call the School Office at 630-355-6607 if you are interested in making Bethany your child’s school home.

### **Ice Cream Social Welcomes Bethany Families!**

Thank you to Bethany’s PTL for the delicious ice cream social last week. New and returning families met and reacquainted themselves at this fun event.



### **Preschool for “4s”—We have room!**

If you are looking for a preschool class for your 4-year old child, we have room. The class meets 4 days a week, Monday through Thursday, 8:40 a.m. to 11:10 a.m. We also have a Friday morning class called the “Book Bunch” that you can add to the Preschool class. The “Book Bunch” will explore a variety of quality children’s authors and will integrate math, science, literacy skills, art and music. For further information please call the School Office at 630-355-6607.

### **Purchase Extra School Supplies!**



It is amazing how many children have learned about the love and forgiveness of Jesus at Grace Lutheran School located in the Little Village neighborhood of Chicago. You can help the boys and girls at Grace even though Bethany is about an hour away. As you come across all the “Back-to-School” sales pick up some school supplies for Grace students and deposit them into the tub provided outside the school office. We would like to be able to deliver school supplies and the first quarter chapel offerings from BLS as we encourage our brothers and sisters in Christ.

## Evangelism and Assimilation

*“And the Lord added to their number daily those who were being saved” Acts 2:47*

### **Are You Interested in Joining Bethany? Here’s How!**

Bethany Lutheran Church is always accepting new members in the Body of Christ and are both thankful and humbled when those in search of a church home choose Bethany. To meet all needs we offer two tracks to becoming a member.

1. If you are not a confirmed Lutheran then you would join by attending our Catechumenate classes. There you will learn what it means to be a Lutheran by studying both the Bible and Luther’s Small Catechism, a summary of the main teachings of the Bible. A current Bethany member will become your sponsor and attend classes with you, getting to know you and introducing you to others at Bethany to help you become familiar with everything Bethany has to offer. The Catechumenate begins meeting on August 30 at 10:15 a.m.

2. If you are already a Lutheran you may join either by transferring from your current or previous church home or by a reaffirmation of faith\*. This route includes a new member ori-

entation process, in which you will attend the last part of the Catechumenate class on the “mystagogy.” This is more than a review of the basics—it’s an orientation into your life at Bethany and how you can serve Christ here.

For those who have been visiting Bethany during the summer, we have a special new member orientation so that they do not have to wait until the end of the Fall Catechumenate. Summer transfers and those making a reaffirmation of faith can attend the first new member orientation class on Tuesday, August 25, with the remainder on Sundays—August 30 and September 13 and 20.

Whatever your current situation, we welcome you to Bethany and invite you to contact Pastor Schumacher or his assistant Sandy Wischmeyer immediately at the church office. (sschumacher@bethanylcs.org; swischmeyer@bethanylcs.org; 630-355-2198).

\*Reaffirmation of faith refers to those who join from another Lutheran body such as Wisconsin Synod or those whose LCMS membership has lapsed.

## **ELCA Officially Endorses Homosexuality: Pray for Her Members that they would see this Error and Repent**

The largest Lutheran denomination in the world, the ELCA (Our Savior, Good Shepherd, St. Timothy and Alleluia in Naperville) has officially voted to endorse homosexuality. We need to pray for the members of this denomination that they would see the error of this false teaching, even as we take the log out of our own eye for our own sins.

You may wonder how a church could contradict the clear word of the Bible on a matter like this. In the middle of the last century the founding churches of the ELCA (the ALC and LCA) stopped believing in the inerrancy of the Bible. In other words, they began to see the Bible as a collection of myths, fables and old-fashioned morals. The ELCA still claims the Bible as the source of doctrine but they believe that the Bible needs to be understood in light of modern day, enlightened thinking. Part of this modern-day, enlightened thinking is to change Biblical morals to make them more in line with modern culture. When you listen to the ELCA leaders speak they talk more about community and one's conscience rather than about straight-forward truths from the Bible.

This is a wake-up call for the LCMS. The ELCA has been influenced by the notion that the church needs to accommodate the culture. Many leaders in the LCMS have been smitten by this same siren call of culture and thus we see all around us churches giving up historic and traditional practices for the sake of being relevant to the culture.

If you have friends or relatives in the ELCA you need to challenge them to leave this heterodox and even heretical church body. Even if a local congregation of the ELCA speaks against this decision it is not right for that congregation to remain in fellowship with a church body that holds so clearly to unscriptural teaching. It has been a long slippery slope that the ELCA has been on since the middle of the last century and they have now arrived at a depth of Scriptural degradation that is quite despicable.

To view the entire statement that was adopted you can go to [www.elca.org](http://www.elca.org) and follow the links to the Churchwide Assembly and from there to the statement on Human Sexuality.

## **Friday Morning Ladies LifeLight Studying Ruth & Esther!**

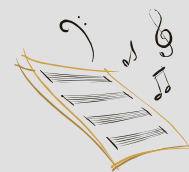


All women are invited to join the Ladies LifeLight Bible study. We will begin the year with a 9-week study of the Women of the Bible in general and specifically, the books of Ruth and Esther. In each of their lives, we see God act in love for the sake of His mission of seeking and saving the lost through His Son, Jesus Christ.

This study **begins next Friday, August 28**. We will meet from 9 – 11 a.m. Pick up a study guide in the church office **today**. Come on Friday with the Session 1 homework completed and ready to discuss.

LifeLight is an excellent way to grow in your time spent in God's Word and to grow in fellowship with other women at Bethany. Come join us to learn together and get to know each other. If you are new to LifeLight Bible study, call Karen Perry (630-904-1043) for an explanation of how to get started. If you need childcare to participate in this Bible study, call Karen Perry.

## ***Still Time to Help Lead the Lord's Song at Bethany***



The beginning of the academic year provides a great opportunity to get involved in parish music. Here are the "start dates" for some of our choral and instrumental ensembles that have openings.

**Proclaim—Thursday, September 3, 7:14-8:35 p.m.**

The main choir of the congregation, open to all singers in grades 8 – adult.

**Schola Cantorum—Wednesday, August 26, 3:35 – 4:25 p.m.**

This "Singing School" for Grades 3-8 sings for the Divine Service on a monthly basis. Public school and home-school students are welcome – even if your local school district makes you a few minutes late!

**Praises Ring! - Monday, August 24, 6:45 – 8:00 p.m.**

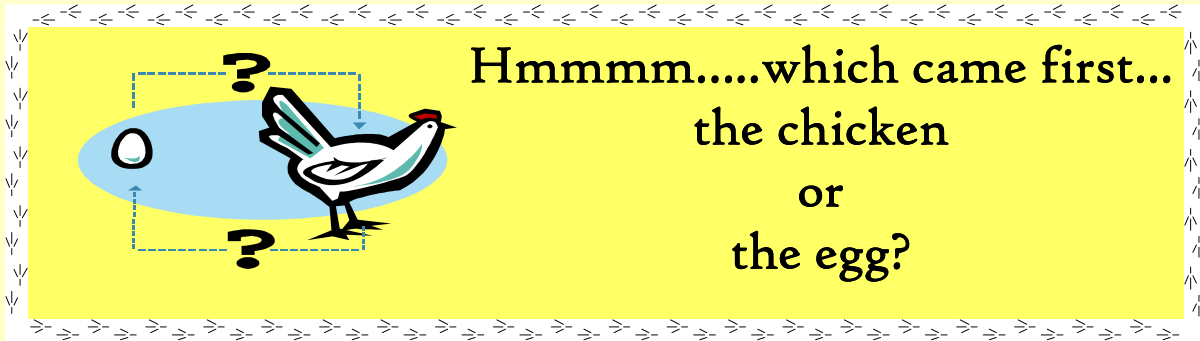
Our handbell choir currently rings 3 octaves of bells – but we own 5. So we have openings. *And we can teach you to read bell music. You just need to be able to keep a beat and count to 4 and we'll help you do the rest!*

**The Bethany Brass—Wednesday, September 12, 7:00-8:15 p.m.**

A brass ensemble open to both youth and adults. This group also divides into special smaller ensemble (trios, duets, quartets.) during the year.

Interested in joining a group? Just contact Cantor Magness ([PMagness@bethanylcs.org](mailto:PMagness@bethanylcs.org) or 630.355.2198, x. 227). Feel free also to inquire also about *Veritas* (a contemporary liturgical ensemble), *Youth Ensemble* (our high school group), and our flute choir.

# Feature Pages



Hmmmm....which came first...  
the chicken  
or  
the egg?

You are invited to meet our chickens

Nellie, Mathilda and Mabel

and contemplate the above question  
(or any other question on your mind)!

### CHICKEN OPEN HOUSE

Sunday, September 6

anytime between 2pm—5pm

at Pastor & Phyllis' house

306 Westbury Court, Naperville

## News of Note

### 55 Plus is going to the Annual Senior Expo

Bethany received ten tickets for the 14th Annual Senior Expo to be held on Wednesday, September 2, 9:00 a.m. to 2:00 p.m. at Drury Lane in Oakbrook, Illinois.

The Expo is an informative event and will be a fun group outing all under one roof. We will go in the church van and we will decide on the time we will leave and return when we see how many seniors are interested. Call Luella Placko (630-983-2985) if you would like to attend.

Join us for this great outing!

### Topsoil Available to Bethany Members



There is a small amount of topsoil left over from our latest landscape projects. The Board of Trustees is inviting any Bethany members to help themselves to this topsoil on a first-come, first served basis. Please neatly remove the soil from the pile located between the two main parking areas.

### Fall Festival at Lutheran Home in Arlington Heights

Bring your Moms and Dads, kids and cousins to the 2009 Fall Festival at the Lutheran Home on Sunday, September 13.

There will be bands, a sports tent, classic car collections, pony rides, train rides, face painting, food and much more. Worship begins at 10:00 a.m. with family festivities beginning at 11:30 a.m. and ending at 5:00 p.m. The Lutheran Home is located at 800 Oakton St. Arlington Heights.

### Bethany to Host Concordia Theological Seminary Recruitment Trip

ME, A PASTOR? If you have found yourself asking this question or have ever considered studying to be a pastor, now is the time to do something about it! Rev. Tom Zimmerman of Concordia Theological Seminary, Fort Wayne, Indiana is going to be at Bethany on **Wednesday, August 26, 2009 from**

**4:00 to 8:00 p.m.** Come and explore the possibility of entering the ministry. Men of all ages are invited, as are their wives, children or fiancées. Some individual appointments are also available 9:00 a.m. to 2:00 p.m. in the west suburban area on August 25 and 27. Call Rev. Tom Zimmerman with questions (1-800-481-2155, 260-452-2278 or 260-402-1024) or email at [thomas.zimmerman@ctsfw.edu](mailto:thomas.zimmerman@ctsfw.edu).

### LWML Bandage-rolling for Missions

Fourteen ladies participated in the LWML bandage-rolling session on Sunday, August 16 in the afternoon and had a great time! After a devotion and brief information-sharing session about the LWML, we ripped sheets and prepared a good number of rolled bandages. Since this was so enjoyable and successful, we decided to schedule another session and hope others will join us to increase our fellowship and also the output of bandages! Please consider joining us on Sunday, October 4 from 3 to 5 p.m. Ladies of all ages are invited (mother/daughter teams as well!). Contact Barb Etter or Ina Johnson for more information.

## Bethany Staff

### Program Staff

Rev. Timothy Rossow ..... Pastor (Team Leader, Administration)  
 Rev. Stephen Schumacher.....Pastor (Evangelism, Assimilation)  
 Pam Mueller..... School Principal  
 Phillip Magness.....Cantor  
 vacant..... Director of Youth and Young Adult Ministries

### Faculty

Louise Bolt..... Pre-Kindergarten  
 Aimee Walsh..... Pre-Kindergarten/Kindergarten  
 Cynthia Niccolai.....Kindergarten  
 Marnie Esposito..... Kindergarten Aide  
 Erin Thompson.....First Grade  
 Sharon Lenich.....First Grade Aide  
 Charlene Fiene..... Second Grade  
 Kirk Bolt..... Third Grade  
 Chad Baganz..... Fourth Grade  
 Nancy Yendrejczyk.....Fourth Grade Aide/Library  
 Erin Dunwell..... Fifth Grade  
 Terry Dierking.....Math/Instructional Aide  
 Angeline McKissick.....PreK-6th Phys. Ed.  
 Michelle Stehle..... Sixth Grade  
 Rob Johnson..... Seventh Grade  
 Glenn Sonltner..... Eighth Grade  
 Holly Spooner.....Special Education  
 Carole Staunch..... Art  
 Mike Vasilie.....Band Director  
 Erin Dunwell.....Athletic Director

### Administrative/Support Staff

Angie Blaesner.....Finance Administrator  
 Laurie Cade..... School Administrator  
 Donna Linnemeyer.....Program Administrator  
 Dennis Bartelt..... Printer  
 Georgia Bevente.....Nursery Coordinator  
 Susan Keller.....Associate Cantor  
 Deanne Lieb.....School Secretary  
 Trevor Magness.....Music/Worship Apprentice  
 Patty Pedigo.....Confirmation/Sunday School Coordinator/Yth Support  
 Phyllis Rossow.....Worship Secretary/Yth Support  
 Pam Splitt.....News & Notes Editor  
 Sandy Wischmeyer.....Evangelism/Membership Secretary

To e-mail any staff member: First initial of first name last name  
 @bethanylcs.org (ex. trossow@bethanylcs.org)

## Voters Board

Tom Mueller..... Chairman  
 Tye Fox..... Vice Chairman  
 Harry Novak..... Treasurer  
 Austin Eisemon..... Head of Board of Trustees  
 Shelly Quinn..... Head of Day School Policy Board  
 Don Lohrentz.....Head of Board of Elders  
 Elaine Gavin.....Recording Secretary  
 Pastor Rossow.....Pastor  
 Pastor Schumacher.....Pastor  
 Pam Mueller.....Principal

## Board of Elders

Don Lohrentz, Head Elder

Tim Benecke	Rob Johnson	Brad Perry
Gregg Berger	Phillip Magness	Chris Thilk
	Dennis Johnson	
Pastor Rossow		Pastor Schumacher

## The Back Page

### Saturday and Sunday, August 29 & 30

Next week's readings: **Is 29:11-19, Eph 5:22-33, Mark 7:1-13**

### Next week's services:

Saturday 08/29 5:00 Divine Service w/communion  
 Sunday 08/30 7:45 Matins no/communion

9:00 Matins no/communion  
 11:15 Divine Service w/communion

**Acolytes:** 5:00 G Groset, S Parr  
 7:45 M Patterson, J Amoroso  
 9:00 P Johnson, M Johnson  
 11:15 K Kolany, B Koka

**Building Opener:** S Lindenmeyer

**Altar Guild:** B Bartelt

**Communion Care:** 5:00 J Killacky  
 11:15 M Psaromatis, G Anderson

**Sacristans:** 5:00  
 11:15 T Mueller, C Thilk, D Buckman, G Luehrsen

### Ushers:

Saturday 08/29 5:00 C Guebert, R Tatar, J Killacky, D Dierking  
 Sunday 08/30 7:45 R Witkowski, R Krachenfels, S Harris  
 9:00 D McKissick, T Lieb, B Hahn, E Gundersen,  
 B Gundersen, T Lieb  
 11:15 R Knosher, W Cade, C Prangley, J Wasson,  
 L Buntrock

**Greeters:** 7:45 B & D Mickelson  
 9:00 K & J Kolany  
 11:15 M & L Cummuta

**Welcome Center:** 5:00  
 7:45 T & D Benecke  
 9:00 D & S Morrow  
 11:15 G & L Luehrsen  
 Georgia Bevente

### Nursery:

(all Sunday Services)

### Coffee Fellowship:

The deadline for the August 30 **News & Notes** is  
 Tuesday, August 25.

### Bethany Lutheran Church & School

1550 Modaff Road Naperville, IL 60565  
 Church: (630) 355-2198 School: (630) 355-6607  
 www.bethanylcs.org

### Service Times

Saturday 5 p.m.  
 Sunday 7:45, 9:00, & 11:15 a.m.

**Communion** 1st & 3rd Sunday 7:45 & 11:15 a.m.  
**Schedule:** 2nd & 4th Sunday 5 p.m. & 9:00 a.m.  
 5th Sunday 9:00 & 11:15 a.m.

**Nursery** The nursery is staffed by Georgia Bevente and volunteers on Sunday mornings. You are welcome to use it as a cry room at the 5 p.m. service.

**Adult Classes & Fellowship** In addition to our four worship services, Sunday morning classes are held weekly at 10:15 a.m. and are open to all members and friends. We enjoy coffee and fellowship before and during our study hour in the Parish Activity Center. All are welcome. **Sunday classes and coffee fellowship is on recess until August 30.**