

# News & Notes

*Connecting People to Christ the Vine  
And Keeping them Connected*

**Bethany's Purpose Statement**—The Church's mission is to build herself up in faith and love, connecting more and more of fallen humanity to Christ, to the praise and glory of God, by and for the transmission of the forgiveness of sins, life and salvation through the Holy Gospel and sacraments of Christ and to keep her members connected to Christ through the same.



## Welcome August 9, 2009 Tenth Sunday after Pentecost

On behalf of the family of Bethany Lutheran Church & School, we welcome our members and especially our guests and visitors in the name of Jesus Christ, our Risen Savior. If you are a visitor to Bethany, we ask you to fill out the yellow guest registration card in the pew rack. **We also invite our visitors to stop by our welcome center** in the Narthex for an information packet about our church.

## What's Happening on Sunday, August 30?

- We will have all three worship services on Sunday, August 30.
- At the 9 a.m. service we will dedicate our Sunday School Teachers and gift Bibles to our 3<sup>rd</sup> grade Sunday School students.
- At 10:15 all classes begin. This includes Sunday School for children, High School Bible Class, Adult Bible Study and Catechumenate classes for those who want to learn about the Lutheran faith. Orientation classes, for new members who are transferring to Bethany, will also take place at 10:15 on August 30 (in addition to 8/25, 9/13 & 9/20).
- Our annual Church and School Picnic begins at 12:30 p.m. Come and enjoy hamburgers, hot dogs and brats. Please bring the following:
  - Last name A-J dessert to serve 10-12
  - Last name K-R cold side dish to serve 10-12
  - Last name S-Z hot side dish to serve 10-12
  - Beverage for you and your family
  - Blanket and chairs

## The Six Chief Duties of the Church

Drawn from Scripture and Recorded in C.F.W. Walther's Book: *The Proper Form of the Christian Congregation*

*Duty 1 - See to it that the Word of God Dwells Richly in your Midst (Colossians 3:16)*

*Duty 2 - Keep the Gospel Pure and Practice Church Discipline (Romans 16:17)*

*Duty 3 - Look after the Temporal Needs of the Church Members (Galatians 6:10)*

*Duty 4 - Do all Things in Good Order (1 Corinthians 14:33)*

*Duty 5 - Band Together with Other Right Teaching Churches (Synod) (Ephesians 4:3)*

*Duty 6 - Expand the Kingdom of Christ (Missions and Evangelism) (Amos 6:6)*

## Calendar

DATE	TIME	DESCRIPTION
Sunday 08/09	7:45AM 9:00  11:15	Service of the Word no/communion Divine Service w/communion No Sunday School classes Service of the Word no/communion
Monday 08/10	8:30 to 10:30AM 9:00 to 10:30 1:00 to 2:30PM 7:00 to 9:00	7/8 Gr. Girls Volleyball Camp—PAC Counters (Crosby Team) - Conf Rm 5/6 Gr. Girls Volleyball Camp—PAC Trustees Meeting—Conf Rm
Tuesday 08/11	8:30 to 10:30AM 10:30 to 12:30PM 1:00 to 2:30	7/8 Gr. Girls Volleyball Camp—PAC Boys Volleyball Camp—PAC 5/6 Gr. Girls Volleyball Camp—PAC
Wednesday 08/12	8:30 to 10:30AM 10:30 to 12:30PM 1:00 to 2:30	7/8 Gr. Girls Volleyball Camp—PAC Boys Volleyball Camp—PAC 5/6 Gr. Girls Volleyball Camp—PAC
Thursday 08/13	8:30 to 10:30AM 10:30 to 12:30PM 8:30 to 10:30	7/8 Gr. Girls Volleyball Camp—PAC Boys Volleyball Camp—PAC 5/6 Gr. Girls Volleyball Camp—PAC
Friday 08/14	8:30 to 10:30AM 10:30 to 12:30PM 8:30 to 10:30 5:00 to 7:00	7/8 Gr. Girls Volleyball Camp—PAC Boys Volleyball Camp—PAC 5/6 Gr. Girls Volleyball Camp—PAC Boe/Onsager Wedding Rehearsal—Sanctuary
Saturday 08/15	9:00 to 10:00AM 8:00 9:00 to 12:00PM 11:00 to 4:00 5:00PM	Market Day—PAC Habitat Workday (offsite) Trustee Workday—Sanctuary Boe/Onsager Wedding—Sanctuary Vespers no/communion
Sunday 08/16	7:45AM 9:00  11:15 3:00PM	Divine Service w/communion Matins no/communion No Sunday School Classes Divine Service w/communion LWML Event—MPR

## Bethany Summaries

Date	Attendance	Unified Offering	Budgeted Contributions
7/05	371	\$11,974	\$17,929
7/12	503	\$14,218	\$17,929
7/19	409	\$11,258	\$17,929
7/26	381	\$9,479	\$17,929
8/02	389	\$18,498	\$13,863

**Monthly Simply Giving Auto Withdrawal Receipts—\$3,353 (not included in above).**



### Last Summer Market Day Date

August 15, 2009. All internet orders are due at 11 p.m. the Wednesday before the sale.

## Christ Lutheran Academy



For information and questions about CLA call the school office at 815-487-4140 from 8:00 a.m. to 12 noon Monday through Friday or visit our website [www.CLA-Plainfield.org](http://www.CLA-Plainfield.org).

**August 30!**

**Rally Day**

**Church and School Picnic**

**All classes begin**

## Ladies Lifelight To Begin Soon

*Ladies Lifelight will begin meeting on August 28 every Friday morning from 9 to 11 a.m.*

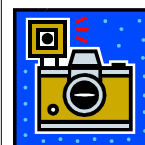
*This session we will study the books of Ruth and Esther.*

*If you need childcare, please contact Karen Perry at 630-904-1043 or [ksperry@wowway.com](mailto:ksperry@wowway.com).*

*Watch the News & Notes for more information to come.*

*Books for this class are in the church office.*

## Pictorial Directory is Coming this Fall



Bethany is planning a new Pictorial Directory this fall. We have reserved November 17/21, November 23/24 and 27/28 for picture taking. If you are planning a family photo for a gift,

we have been guaranteed delivery for Christmas. Watch upcoming News & Notes for more information.

**In Our Prayers** (as of 08/03/09)



**All of our Members, especially:** Rick Allmon, recovery from back surgery; Louise Bolt, cancer treatments; Mike Broggi, recovery from surgery; Esther Gehrs, recovery from fall; Eleanor Kerth, cancer; Vern Purpur, eye problems; Bill Schoen, ill health; Glenn Volkmann, ill health;

Ray and Peg Van Ham, ill health; Ed Warner, recovery from pneumonia; *(please renew/update prayer requests after four weeks)*

**All of our Family Members & Friends, especially:**

Sandy Anderson, (friend of Glenn Sonlitner) cancer treatments; Sue Bahlmann, (cousin of Mike/Sheri Walsh) Katie Beres, (niece of Brian and Sheril Hagie) cancer/chemo treatments; Laura Parker & Suzanne Brandenburg, (sisters and friends of the Pilgrim family) fighting breast cancer; Anne Broggi, (mother of Mike Broggi) hospice care; Steve Cawi, (brother-in-law of Fred Hardin) eye cancer; Terry Gallagher, (friend of David Brouch) cancer/chemo treatments; Connie Koenig, (relative of Tim Gutzwiller) ill health; Marj Koenig, (aunt of Tim Gutzwiller) cancer; Brittany Panzera, (relative of the Collins family) recovery from insect bite; *(please renew/update prayer requests after two weeks)*.

For Bill and Heather Murphy at the birth of a baby girl, Amanda Lynn on July 30.

**Chancel Flowers**

Flowers for this Sunday, August 9 were placed by Tim and Diane Benecke for their 34th wedding anniversary.

**Baptism**



Amelia Carroll Wright, daughter of Mason and Karen (Lindenmeyer) Wright will be baptized at the 11:15 a.m. service this weekend. Amelia's godparents are Steve Watwood, Donna Watwood, Jim Campbell and Debbie Campbell.

ONE LORD  
ONE FAITH  
ONE BAPTISM

**Worship At Bethany**

Does Bethany offer contemporary worship? Does Bethany have traditional services? Worship at Bethany is both - and neither. Like many parishes, Bethany seeks to unite God's family in worship that rises above stylistic preferences.

Christian worship begins with the crucified Christ, who comes to us in Word and Sacrament. He brings to the people of God forgiveness of sins, life, and salvation. We in turn extol these gifts with joyful thanksgiving and praise, proclaiming the story of God's love through His Word. This celebration is done in concert with the Church throughout the world, and finds its expression in the liturgy. Lutheran worship is therefore traditional in that it is part of the timeless culture of the Church, and contemporary in that it communicates the Gospel in ways that are appropriate to a given place and time. Since worship is the vocation of all baptized Christians, Lutheran liturgy calls for all individuals to do their parts, that faith may be increased among all who worship, and that Christ may be most strongly confessed before the world.

Providing worship that achieves these noble ends is the responsibility of any Christian congregation. Continuing in the tradition of the evangelical Lutheran communion, the Divine Service at Bethany seeks therefore to involve all who gather in the name of the Lord in the proclaiming, confessing, singing, and praying of God's Word.

**Military Prayers**

All men and women serving in the military, especially Nathan Awis, Sean Benson, Kurt Bevente, Clint Burnell, Tracey Collins, Sean Haggerty, Luke Harms, Jim Heim, Matthew Hinze, Peter Johnson, Michael Kato, Ryan Killacky, Jeremy Klinger, Jim Kolzow, Joe Krefft, Christopher Lee, Matt Nelson, Jason Skeen, Nicholas Camm Williams, Joshua Zyskowski.

**Prayer Chain Requests:** Please call Marlene Elder at 630-961-1095 or Gertrude Bartha at 630-355-4871.

**There will be no Sunday School today  
and on August 16 and 23.  
Rally Day is August 30.**

# Bible Study Page

## Youth

*"They devoted themselves to the apostles teaching and they ate together with glad and sincere hearts" Acts 2:42.46*

### Culver's Bible Study Summer Schedule

Sunday, August 16

**6:30 to 8 p.m.** See you there and remember to bring a friend.

Culvers @ 75th & Rt. 59



### Attention 2009 Confirmands

We still have 12 Confirmation group pictures left to be picked up. If you haven't done so, please stop by the church office. Be sure to take the envelope with your name on it.

### Attention Koinonia & Oasis



Koinonia (4th/5th grades) and Oasis (6th/7th/8th grades) Fall Kickoff is planned for Friday, September 4 with Koinonia meeting from 6 to 7 p.m. and Oasis meeting from 7:30 to 9 a.m. Mark your calendars and watch for details.

## Parish Education Opportunities

*"They devoted themselves to the apostles teaching." Acts 2:42*

### All Sunday Classes begin at 10:15 a.m.

Sunday School, Adult Bible Study and High School Bible Study resume on August 30.

#### Sunday School-Patty Pedigo, SS Superintendent

There is no Sunday School today and August 16 and 23. We resume on Rally Day, Sunday, August 30.

#### High School Bible Study

There are no classes today and on August 16 and 23.

### Weekday Bible Classes

#### Tuesday Evening Teachings of the Lutheran Church

Pastor Rossow's class on the Teachings of the Lutheran Church and the Scriptures will resume in September.

#### Wednesday Morning Bible Study

This class is in recess for the summer.

#### Wednesday Evening LifeLight

Both branches of the Wednesday evening Lifelight Bible study will resume in fall

#### LifeLight for Women

Women's Friday Morning Lifelight is on break for the summer and will resume on August 28.

#### Saturday Men's Bible Breakfast

Pastor Schumacher teaches a Bible Study the 1st and 3rd Saturday of each month in the multi-purpose room at 7:30 a.m. See page 6 for more information. All men are welcome.

#### LWML Bible Study

LWML Bible Study is on break for the summer.

# Ministry Pages

## Day School

*“They devoted themselves to the apostles’ teaching.” Acts 2:42*

### *The Role of Our School*

*We are committed to connecting children to Christ and keeping them connected to Him through education, and so we operate a Pre-K through 8th grade school. Our school is a major priority for us, along with preaching and teaching the Word in our regular services.*



### School Office on Summer Schedule

Summer Office hours are 9:00 a.m. to 3:00 p.m. Monday through Friday. The School Office staff has returned and will be taking phone calls between the hours of 9:00 a.m. and 3:00 p.m. The teachers will be returning to the classrooms on Monday, August 17.

### Preschool for “4s”—We have room!

If you are looking for a preschool class for your 4-year old child, we have room. The class meets 4 days a week, Monday through Thursday, 8:40 a.m. to 11:10 a.m. We also have a Friday morning class called the “Book Bunch” that you may add to the Preschool class. The “Book Bunch” will explore a variety of quality children’s authors and will integrate math, science, literacy skills, art and music. For further information please call the School Office at 630-355-6607.

### School Enrollment for the 2009-2010 School Year

School begins on Monday, August 24, and we are still accepting enrollment in the majority of our classes. Please call the School Office for additional information on any of the classes for the fall.

### Welcome and Welcome Back!

If you are a new family to Bethany Lutheran School or a returning family, please join us on **Monday, August 17** for New Family Orientation and Welcome back Ice Cream Social. The “New Family Orientation” begins at 6:00 p.m. and the “Ice Cream Social” begins at 7:00 p.m. Mark your calendar for an informative and fun evening.

### Manna for the Summer

The next opportunity to purchase Manna cards on Sunday will be August 16. An order will be placed on August 11. Completed order forms and payments can be left at the manna kiosk or sent into the School Office. Orders must be received by 10:00 a.m. on the order day. Filled orders can be picked up in the School Office during office hours or during Sunday manna hours.

### New Family Orientation & Welcome Back Ice Cream Social

**Monday, August 17—6 p.m.**

**Registration Day**

**Thursday, August 20**

**9-11 a.m. & 6-7 p.m.**

**First Day of School**

**Monday, August 24**

## Evangelism and Assimilation

*“And the Lord added to their number daily those who were being saved” Acts 2:47*

### Are You Interested in Joining Bethany? Here’s How!

Bethany Lutheran Church is always accepting new members in the Body of Christ and are both thankful and humbled when those in search of a church home choose Bethany. To meet all needs we offer two tracks to becoming a member.

1. If you are not a confirmed Lutheran then you would join by attending our Catechumenate classes. There you will learn what it means to be a Lutheran by studying both the Bible and Luther’s Small Catechism, a summary of the main teachings of the Bible. A current Bethany member will become your sponsor and attend classes with you, getting to know you and introducing you to others at Bethany to help you become familiar with everything Bethany has to offer. The Catechumenate begins meeting on August 30 at 10:15 a.m.

2. If you are already a Lutheran you may join either by transferring from your current or previous church home or by a reaffirmation of faith\*. This route includes a new member ori-

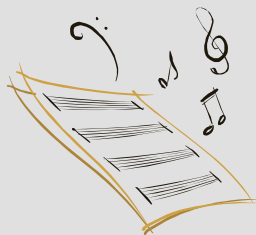
entation process, in which you will attend the last part of the Catechumenate class on the “mystagogy.” This is more than a review of the basics—it’s an orientation into your life at Bethany and how you can serve Christ here.

For those who have been visiting Bethany during the summer, we have a special new member orientation so that they do not have to wait until the end of the Fall Catechumenate. Summer transfers and those making a reaffirmation of faith can attend the first new member orientation class on Tuesday, August 25, with the remainder on Sundays—August 30 and September 13 and 20.

Whatever your current situation, we welcome you to Bethany and invite you to contact Pastor Schumacher or his assistant Sandy Wischmeyer immediately at the church office. (sschumacher@bethanylcs.org; swischmeyer@bethanylcs.org; 630-355-2198).

\*Reaffirmation of faith refers to those who join from another Lutheran body such as Wisconsin Synod or those whose LCMS membership has lapsed.

## Help Lead the Lord's Song at Bethany



The beginning of the academic year provides a great opportunity to get involved in parish music. Here are the "start dates" for some of our choral and instrumental ensembles that have openings.

### **Proclaim—Thursday, September 3, 7:14-8:35 p.m.**

The main choir of the congregation, open to all singers in grades 8 – adult.

### **Schola Cantorum—Wednesday, August 26; 3:35 – 4:25 p.m.**

This "Singing School" for Grades 3-8 sings for the Divine Service on a monthly basis. Public school and home-school students are welcome – even if your local school district makes you a few

minutes late!

### **Praises Ring! - Monday, August 24, 6:45 – 8:00 p.m.**

Our handbell choir currently rings 3 octaves of bells – but we own 5. So we have openings. *And we can teach you to read bell music. You just need to be able to keep a beat and count to 4 and we'll help you do the rest!*

### **The Bethany Brass—Wednesday, September 12, 7:00-8:15 p.m.**

A brass ensemble open to both youth and adults. This group also divides into special smaller ensemble (trios, duets, quartets.) during the year.

Interested in joining a group? Just contact Cantor Magness ([PMagness@bethanylcs.org](mailto:PMagness@bethanylcs.org) or 630.355.2198, x. 227). Feel free also to inquire also about *Veritas* (a contemporary liturgical ensemble), *Youth Ensemble* (our high school group), and our flute choir.

## Men's Bible Breakfast Invites You!



On Saturday, August 1 at 7:30 a.m. eleven Bethany men gathered together for coffee, doughnuts, prayer and study. Men from their 80's to their early 30's meet to grow in Christ and to build each other up. The Men's Bible Breakfast at Bethany has been going for many years and has a very simple format. Men gather at 7:30 a.m. on the 1st and 3rd Saturday of each month (on the first it's doughnuts, on the third we enjoy a hot prepared breakfast). Pastor Schumacher leads the study, which begins at 8. We are currently studying Luther's *A Simple Way to Pray*. A free will offering is received and is designation to The Lutheran Heritage Foundation. Over the years we have given thousands to the Foundation's work in spreading the Gospel. The Men's Bible Breakfast is the place to be for men of Bethany!

## AMAZING GRACE—You Can Make a Difference!



It is amazing how many children have learned about the love and forgiveness of Jesus at Grace Lutheran School located in the Little Village neighborhood of Chicago. You can help the boys and girls at Grace even though Bethany is about an hour away. As you come across all of the "Back-to-School" sales in the coming weeks, pick up some school supplies for Grace students, and deposit them into the tub provided outside the school office. We would like to be able to deliver school supplies and the first quarter chapel offerings from BLS as we encourage our brothers and sisters in Christ.

## Attention All Ushers!



Let's spice up your dog days of summer! We are having a training session next **Sunday, August 16 at 10 a.m. between church services**. This will be practical training on new handouts for children, what to do for baptisms, safety procedures and promoting Christian piety. Please make every effort to come and get this important training. A well-trained staff is a staff that can do a good job. For questions or comments talk to Chuck Guebert. See you there!



CHRIST-CENTERED, CROSS-FOCUSED TALK RADIO.....You can listen to in-depth discussions on topics like Christian Zionism, Christian Narcissism, The Lord's Prayer, Health Care Reform & Abortion, Johann Sebastian Bach and more. Issues, Etc. is a radio talk show produced by Lutheran Public Radio and hosted by LCMS Pastor Todd Wilken. You can listen to what you want when you want at [www.issuesetc.org](http://www.issuesetc.org).

# Feature Pages

## Mark These Events on your Calendar!

The Bethany Lutheran Church and School calendar is full of upcoming events for our entire church family. Here are some dates to note:

- **Sunday, August 16 at 10 a.m.**—Usher Meeting and from **3 to 5 p.m.** LWML Working Meeting.
- **Monday, August 17 at 6 p.m.**—BLS New Family Orientation & Welcome Back Ice Cream Social.
- **Thursday, August 20**—BLS Registration Day (**9-11 a.m. and 6-7 p.m.**).
- **Monday, August 24**—BLS First Day of School.
- **Sunday, August 30**—All Sunday Classes begin.
- **Sunday, August 30**—Church and School Picnic after the **11:15 a.m.** service.
- **Tuesday, September 8 at 7 p.m.**—Voters Meeting.
- **Sunday, September 20**—Faith Sings LCFS Hymn Festival.

## News of Note

### You're Invited to the LWML

Do you wonder what LWML means or what they do? The Lutheran Women's Missionary League is the women's auxiliary of the LCMS. Thousands of women have met for convention for over 65 years in love, fellowship and joint service to help spread the Gospel through their mite contributions and prayers. The goal is to provide for the practical needs of missionary projects throughout the globe. In addition, women are personally involved in missions. One such opportunity will be offered here at Bethany on August 16 from 3 to 5 p.m. You are invited to come and rip sheets into strips and roll them into bandages. These will be sent to Africa to be used in areas where commercial bandages are in short supply.

If you have any old WHITE sheets to donate, please wash them again and bring them to the meeting. We also have a wood-working project you may enjoy doing with your children as a summer activity.

Ladies, both young and old, consider finding out more about the LWML by coming to this work-meeting and to enjoy fun and fellowship as well!

For more information and to RSVP contact Ina Johnson (630-369-6074) [muttiina@gmail.com](mailto:muttiina@gmail.com) or Barb Etter (630-420-0626) [barbetter@comcast.net](mailto:barbetter@comcast.net) for more information.

### 55 Plus is going to the Annual Senior Expo

Bethany received ten tickets for the 14th Annual Senior Expo to be held on Wednesday, September 2, 9:00 a.m. to 2:00 p.m.

at Drury Lane in Oakbrook, Illinois.

The Expo is an informative event and will be a fun group outing all under one roof. We will go in the church van and we will decide on the time we will leave and return when we see how many seniors are interested. Call Luella Placko (630-983-2985) if you would like to attend. Join us for this great outing!

### Bethany to Host Concordia Theological Seminary Recruitment Trip



ME, A PASTOR? If you have found yourself asking this question or have ever considered studying to be a pastor, now is the time to do something about it! Rev.

Tom Zimmerman of Concordia Theological Seminary, Fort Wayne, Indiana is going to be at Bethany on **Wednesday, August 26, 2009 from 4:00 to 8:00 p.m.** Come and explore the possibility of entering the ministry. Men of all ages are invited, as are their wives, children or fiancées. Some individual appointments are also available 9:00 a.m. to 2:00 p.m. in the west suburban area on August 25 and 27. Call Rev. Tom Zimmerman with questions (1-800-481-2155, 260-452-2278 or 260-402-1024) or email at [thomas.zimmerman@ctsfw.edu](mailto:thomas.zimmerman@ctsfw.edu).

**August 26, 2009 from 4:00 to 8:00 p.m.** Come and explore the possibility of entering the ministry. Men of all ages are invited, as are their wives, children or fiancées. Some individual appointments are also available 9:00 a.m. to 2:00 p.m. in the west suburban area on August 25 and 27. Call Rev. Tom Zimmerman with questions (1-800-481-2155, 260-452-2278 or 260-402-1024) or email at [thomas.zimmerman@ctsfw.edu](mailto:thomas.zimmerman@ctsfw.edu).

## Bethany Staff

### Program Staff

Rev. Timothy Rossow .....Pastor (Team Leader, Administration)  
 Rev. Stephen Schumacher.....Pastor (Evangelism, Assimilation)  
 Pam Mueller.....School Principal  
 Phillip Magness.....Cantor  
 vacant.....Director of Youth and Young Adult Ministries  
 Valerie Buckland.....Deaconess Intern

### Faculty

Louise Bolt.....Pre-Kindergarten  
 Jennifer Gutzwiller.....Pre-Kindergarten  
 Aimee Walsh.....Pre-Kindergarten/Kindergarten  
 Cynthia Niccolai.....Kindergarten  
 Marnie Esposito.....Kindergarten Aide  
 Erin Thompson.....First Grade  
 Sharon Lenich.....First Grade Aide  
 Charlene Fiene.....Second Grade  
 Kirk Bolt.....Third Grade  
 Chad Baganz.....Fourth Grade  
 Erin Dunwell.....Fifth Grade  
 Terry Dierking.....Math/Instructional Aide  
 Nancy Yendrejczyk.....Library/Instructional Aide  
 Angelina McKissick.....PreK-6th Phys. Ed.  
 Michelle Stehle.....Sixth Grade  
 Rob Johnson.....Seventh Grade  
 Glenn Sonlitner.....Eighth Grade  
 Holly Spooner.....Special Education  
 Carole Staunch.....Art  
 Mike Vasilie.....Band Director  
 Erin Dunwell.....Athletic Director

### Administrative/Support Staff

Angie Blaesner.....Finance Administrator  
 Laurie Cade.....School Administrator  
 Donna Linnemeyer.....Program Administrator  
 Dennis Bartelt.....Printer  
 Georgia Bevente.....Nursery Coordinator  
 Susan Keller.....Associate Cantor  
 Deanne Lieb.....School Secretary  
 Trevor Magness.....Music/Worship Apprentice  
 Patty Pedigo.....Confirmation/Sunday School Coordinator/Yth Support  
 Phyllis Rossow.....Worship Secretary/Yth Support  
 Pam Splitt.....News & Notes Editor  
 Sandy Wischmeyer.....Evangelism/Membership Secretary

To e-mail any staff member: First initial of first name last name  
 @bethanylcs.org (ex. trossow@bethanylcs.org)

## Voters Board

Tom Mueller.....Chairman  
 Tye Fox.....Vice Chairman  
 Harry Novak.....Treasurer  
 Austin Eisemon.....Head of Board of Trustees  
 Shelly Quinn.....Head of Day School Policy Board  
 Don Lohrentz.....Head of Board of Elders  
 Elaine Gavin.....Recording Secretary  
 Pastor Rossow.....Pastor  
 Pastor Schumacher.....Pastor  
 Pam Mueller.....Principal

## Board of Elders

Don Lohrentz, Head Elder

Tim Benecke      Rob Johnson      Brad Perry  
 Gregg Berger      Phillip Magness      Chris Thilk  
                                 Dennis Johnson  
 Pastor Rossow      Pastor Schumacher

## The Back Page

### Saturday and Sunday, August 15 & 16

Next week's readings: **Prov 9:1-10, Eph 5:6-21, John 6:51-69**

### Next week's services:

Saturday 08/15	5:00	Vespers no/communion
Sunday 08/16	7:45	Divine Service w/communion
	9:00	Matins no/communion
	11:15	Divine Service w/communion
<b>Acolytes:</b>	5:00	K Kolany, Kim Lechowicz
	7:45	E Krachenfels, A Perry
	9:00	E Dierking, L Dierking
	11:15	C Johnson, J Reid
<b>Building Opener:</b>		R Tataara
<b>Altar Guild:</b>		B Bartelt
<b>Communion Care:</b>	7:45	W Diersen, B Etter
	11:15	M Knosher, B McKissick
<b>Sacristans:</b>	7:45	R Fick
	11:15	J Burke, H Novak, C Benecke, T Benecke

### Ushers:

Saturday 08/15	5:00	
Sunday 08/16	7:45	R Witkowski, R Krachenfels, S Harris
	9:00	D McKissick, T Lieb, B Hahn, E Gundersen, B Gundersen, T Lieb
	11:15	R Knosher, W Cade, C Prangley, J Wasson, L Buntrock

### Greeters:

	7:45	J Lechowicz
	9:00	D & C Groth
	11:15	L & J Buntrock

### Welcome Center:

	5:00	
	7:45	P Splitt
	9:00	J & B Schnarr
	11:15	L Cade

### Nursery:

(all Sunday Services)

Georgia Bevente

### Coffee Fellowship:

The deadline for the August 16 **News & Notes** is  
 Tuesday, August 11.

### Bethany Lutheran Church & School

1550 Modaff Road      Naperville, IL 60565  
 Church: (630) 355-2198      School: (630) 355-6607  
 www.bethanylcs.org

### Service Times

Saturday	5 p.m.
Sunday	7:45, 9:00, & 11:15 a.m.

<b>Communion</b>	1st & 3rd Sunday	7:45 & 11:15 a.m.
<b>Schedule:</b>	2nd & 4th Sunday	5 p.m. & 9:00 a.m.
	5th Sunday	9:00 & 11:15 a.m.

**Nursery** The nursery is staffed by Georgia Bevente and volunteers on Sunday mornings. You are welcome to use it as a cry room at the 5 p.m. service.

**Adult Classes & Fellowship** In addition to our four worship services, Sunday morning classes are held weekly at 10:15 a.m. and are open to all members and friends. We enjoy coffee and fellowship before and during our study hour in the Parish Activity Center. All are welcome. **Sunday classes and coffee fellowship is on recess for the month of August.**