

# News & Notes

*Connecting People to Christ the Vine  
And Keeping them Connected*

**Bethany's Purpose Statement**—The Church's mission is to build herself up in faith and love, connecting more and more of fallen humanity to Christ, to the praise and glory of God, by and for the transmission of the forgiveness of sins, life and salvation through the Holy Gospel and sacraments of Christ and to keep her members connected to Christ through the same.



## Welcome

August 2, 2009

Ninth Sunday after Pentecost

On behalf of the family of Bethany Lutheran Church & School, we welcome our members and especially our guests and visitors in the name of Jesus Christ, our Risen Savior. If you are a visitor to Bethany, we ask you to fill out the yellow guest registration card in the pew rack. **We also invite our visitors to stop by our welcome center** in the Narthex for an information packet about our church.

## Waiting to Get Your Lutheran Study Bible? The Presses are Running!

We just received word from Concordia Publishing House that the new, much awaited Lutheran Study Bible is in print production right now. This is the first truly Lutheran study bible in both translation and in commentary. Regular and large print editions can both be ordered now for distribution on Reformation Day 2009. The bibles will be shipped on a first-come, first-served basis so get your order in today to assure that you receive one of the bibles from the first print run. To learn more about the background of the Lutheran Service Book or to place an order, go to [cph.org](http://cph.org). The phone number for CPH is 1 888 325-3040. If you would really like to follow the progress on the production of this exciting new bible, and be edified in the process, check out [www.twitter.com/lutheranbible](http://www.twitter.com/lutheranbible). Please note that we plan to stock the LSB in our Bethany Bookstore later this fall, passing along the introductory price savings from CPH.

## New Date for Rally Day, Church & School Picnic— August 30!

We have scheduled our Rally Day and Church and School Picnic earlier than usual this year. Please mark Sunday, August 30 on your calendar now. This will be the first day of Sunday School and all Sunday classes for the fall season. The Church and School picnic begins right after the 11:15 a.m. service. Watch for details!

## The Six Chief Duties of the Church

Drawn from Scripture and Recorded in C.F.W.  
Walther's Book: *The Proper Form of the  
Christian Congregation*

*Duty 1 - See to it that the Word of  
God Dwells Richly in your Midst  
(Colossians 3:16)*

*Duty 2 - Keep the Gospel Pure and  
Practice Church Discipline  
(Romans 16:17)*

*Duty 3 - Look after the Temporal  
Needs of the Church Members  
(Galatians 6:10)*

*Duty 4 - Do all Things in Good Order  
(I Corinthians 14:33)*

*Duty 5 - Band Together with Other  
Right Teaching Churches (Synod)  
(Ephesians 4:3)*

*Duty 6 - Expand the Kingdom of  
Christ (Missions and Evangelism)  
(Amos 6:6)*

## Calendar

DATE	TIME	DESCRIPTION
Sunday 08/02	7:45AM 9:00  11:15	Divine Service w/communion Service of the Word no/communion No Sunday School classes in August Divine Service w/communion
Monday 08/03	9:00 to 10:30AM 7:30 to 9:00PM	Sanctuary Cleaning Counters (Crosby Team) - Conf Rm Voters Board—Conf Rm
Tuesday 08/04		Sanctuary Cleaning
Wednesday 08/05	7:00 to 9:00PM	A New Song Bible Study
Thursday 08/06		
Friday 08/07	9:00 to 11:00AM	Open Gym—PAC
Saturday 08/08	7:30 to 9:00AM 5:00PM	Saturday Morning Men's Basketball—PAC Divine Service w/communion
Sunday 08/09	7:45AM 9:00  11:15	Service of the Word no/communion Divine Service w/communion No Sunday School Classes in August Service of the Word no/communion

### Christ Lutheran Academy



For information and questions about CLA call the school office at 815-487-4140 from 8:00 a.m. to 12 noon Monday through Friday or visit our website [www.CLA-Plainfield.org](http://www.CLA-Plainfield.org).

**Rally Day  
and the Church  
and School Picnic  
is set for August 30!**

### Bethany Summaries

Date	Attendance	Unified Offering	Budgeted Contributions
6/28	437	\$11,369	\$17,485
7/05	371	\$11,974	\$17,929
7/12	503	\$14,218	\$17,929
7/19	409	\$11,258	\$17,929
7/26	381	\$9,479	\$17,929

**Monthly Simply Giving Auto Withdrawal Receipts—\$3,353 (not included in above).**

### Ladies Lifelight To Begin Soon

*Ladies Lifelight will begin meeting on August 28 every Friday morning from 9 to 11 a.m.*

*This session we will study the books of Ruth and Esther.*

*If you need childcare, please contact Karen Perry at 630-904-1043 or [ksperry@wowway.com](mailto:ksperry@wowway.com).*

*Watch the News & Notes for more information to come.*



**Women's Summer Bible Study "A New Song: A Women's Bible Study Devotional"**

There are still a couple dates left to join Bethany's Women's Summer Bible Study (**August 5 & August 19—7 to 9 p.m.**). Come and grow in God's Word, read straight from the heart stories written by women for women, watch inspirational DVD presentations and experience the true love of Christ. Call Karen Perry with questions 630-904-1043.

**In Our Prayers** (as of 07/30/09)



**All of our Members, especially:** Rick Allmon, recovery from back surgery; Louise Bolt, cancer treatments; Eleanor Kerth, cancer; Kelleigh Kuehl, healing from wrist surgery; Vern Purpur, eye problems; Bill Schoen, ill health; Glenn Volkmann, ill health; Peg Van Ham, ill health; Ray Van Ham, continued recovery; Ed Warner, recovery from pneumonia; *(please renew/update prayer requests after four weeks)*

**All of our Family Members & Friends, especially:** Sandy Anderson, (friend of Glenn Sonlitner) cancer treatments; Katie Beres, (niece of Brian and Sheril Hagie) cancer/chemo treatments; Laura Parker & Suzanne Brandenburg, (sisters and friends of the Pilgrim family) fighting breast cancer; Anne Broggi, (mother of Mike Broggi) hospice care; Steve Cawi, (brother-in-law of Fred Hardin) eye cancer; Laura Collier, (friend of the Hetherman family) breast cancer; Noli Faustino, (friend of the Heatherman family) colon cancer; Terry Gallagher, (friend of David Brouch) cancer/chemo treatments; Anthony Miglore, (brother of Grace Shoemaker) recovery from surgery; Brittany Panzera, (relative of the Collins family) recovery from insect bite; Corinne Pickell, (mother of Judy Teske) strength and healing. *(please renew/update prayer requests after two weeks).*

**Chancel Flowers**

Flowers for this Sunday, August 2 were placed by Muriel Skarin in memory of husband Bob.

**Worship At Bethany**

Does Bethany offer contemporary worship? Does Bethany have traditional services? Worship at Bethany is both - and neither. Like many parishes, Bethany seeks to unite God's family in worship that rises above stylistic preferences.

Christian worship begins with the crucified Christ, who comes to us in Word and Sacrament. He brings to the people of God forgiveness of sins, life, and salvation. We in turn extol these gifts with joyful thanksgiving and praise, proclaiming the story of God's love through His Word. This celebration is done in concert with the Church throughout the world, and finds its expression in the liturgy. Lutheran worship is therefore traditional in that it is part of the timeless culture of the Church, and contemporary in that it communicates the Gospel in ways that are appropriate to a given place and time. Since worship is the vocation of all baptized Christians, Lutheran liturgy calls for all individuals to do their parts, that faith may be increased among all who worship, and that Christ may be most strongly confessed before the world.

Providing worship that achieves these noble ends is the responsibility of any Christian congregation. Continuing in the tradition of the evangelical Lutheran communion, the Divine Service at Bethany seeks therefore to involve all who gather in the name of the Lord in the proclaiming, confessing, singing, and praying of God's Word.

**Military Prayers**

All men and women serving in the military, especially Nathan Awis, Sean Benson, Kurt Bevente, Clint Burnell, Tracey Collins, Sean Haggerty, Luke Harms, Jim Heim, Matthew Hinze, Peter Johnson, Michael Kato, Ryan Killacky, Jeremy Klinger, Jim Kolzow, Joe Krefft, Christopher Lee, Matt Nelson, Jason Skeen, Nicholas Camm Williams, Joshua Zyskowski.

**Prayer Chain Requests:** Please call Marlene Elder at 630-961-1095 or Gertrude Bartha at 630-355-4871.

**There will be no Sunday School today  
and on August 9, 16 and 23.  
Our Rally Day is August 30.**

# Bible Study Page

## Youth

*“They devoted themselves to the apostles teaching and they ate together with glad and sincere hearts” Acts 2:42,46*

### Culver's Bible Study Summer Schedule

Sunday, August 16

**6:30 to 8 p.m.** See you there and remember to bring a friend.

Culvers @ 75th & Rt. 59



### Attention 2009 Confirmands

We still have 12 Confirmation group pictures left to be picked up. If you haven't done so, please stop by the church office. Be sure to take the envelope with your name on it.

### Attention Koinonia & Oasis



Koinonia (4th/5th grades) and Oasis (6th/7th/8th grades) Fall Kickoff is planned for Friday, September 4 with Koinonia meeting from 6 to 7 p.m. and Oasis meeting from 7:30 to 9 a.m. Mark your calendars and watch for details.

## Parish Education Opportunities

*“They devoted themselves to the apostles teaching.” Acts 2:42*

### All Sunday Classes begin at 10:15 a.m.

There are no Sunday School, Adult Bible Study or High School Bible Study in the Month of August.

#### Sunday School-Patty Pedigo, SS Superintendent

There is no Sunday School today and August 9, 16 and 23. We resume on Rally Day, Sunday, August 30.

#### High School Bible Study

There are no classes today and on August 9, 16 and 23.

### Weekday Bible Classes

#### Tuesday Evening Teachings of the Lutheran Church

Pastor Rossow's class on the Teachings of the Lutheran Church and the Scriptures will resume in September.

#### Wednesday Morning Bible Study

This class is in recess for the summer.

#### Wednesday Evening LifeLight

Both branches of the Wednesday evening Lifelight Bible study will resume in fall

#### LifeLight for Women

Women's Friday Morning Lifelight is on break for the summer. See page 2 for the women's Bible study opportunity being offered this summer.

#### Saturday Men's Bible Breakfast

Pastor Schumacher teaches a Bible Study the 1st and 3rd Saturday of each month in the multi-purpose room at 7:30 a.m. All men are welcome.

#### LWML Bible Study

LWML Bible Study is on break for the summer.

# Ministry Pages

## Day School

*“They devoted themselves to the apostles’ teaching.” Acts 2:42*

### **The Role of Our School**

*We are committed to connecting children to Christ and keeping them connected to Him through education, and so we operate a Pre-K through 8th grade school. Our school is a major priority for us, along with preaching and teaching the Word in our regular services.*



### **School Office on Summer Schedule**

Summer office hours are 9:00 a.m. to 3:00 p.m. Monday through Friday. While most of the teachers are gone for the summer, the 12 month called teachers are in the building to answer calls and questions.

### **School Registration for the 2009/10 School Year**

All classes are open with the exception of the Preschool 4's morning class, Kindergarten and Fourth grade.

These classes are filled with the maximum number of students. Our 1<sup>st</sup> grade and Jr. High grades are just a few students short of being closed as well. Please call the school office for additional information on any of the classes for the fall.

### **Last Summer Market Day Date**—August 15, 2009.

All internet orders are due at 11 p.m. the Wednesday before the sale

### **Manna for the Summer**

Manna will be sold on the 1<sup>st</sup> and 3<sup>rd</sup> Sundays during the summer months (August 2 & 16). Any orders will be placed on August 11. Completed order forms and payments can be left at the manna kiosk or sent into the School Office. Orders must be received by 10:00 a.m. on the order day. Filled orders can be picked up in the School Office during office hours or during Sunday manna hours.

### **New Family Orientation & Welcome Back Ice Cream Social**

**Monday, August 17—6 p.m.**

**Registration Day**

**Thursday, August 20**

**9-11 a.m. & 6-7 p.m.**

**First Day of School**

**Monday, August 24**



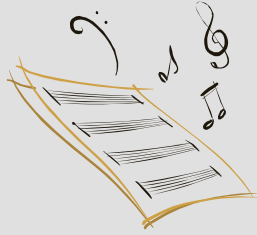
## Evangelism and Assimilation

*“And the Lord added to their number daily those who were being saved” Acts 2:47*



If you want to join Bethany or learn more about the Lutheran faith, please contact Pastor Schumacher or his assistant, Sandy Wischmeyer at 630-355-2198 or email Pastor Schumacher at [sschumacher@bethanylcs.org](mailto:sschumacher@bethanylcs.org).

## Help Lead the Lord's Song at Bethany



The beginning of the academic year provides a great opportunity to get involved in parish music. Here are the "start dates" for some of our choral and instrumental ensembles that have openings.

### **Proclaim—Thursday, September 3, 7:14-8:35 p.m.**

The main choir of the congregation, open to all singers in grades 8 – adult.

### **Schola Cantorum—Wednesday, August 26; 3:35 – 4:25 p.m.**

This "Singing School" for Grades 3-8 sings for the Divine Service on a monthly basis. Public school and home-school students are welcome – even if your local school district makes you a few minutes late!

### **Praises Ring! - Monday, August 24, 6:45 – 8:00 p.m.**

Our handbell choir currently rings 3 octaves of bells – but we own 5. So we have openings. *And we can teach you to read bell music. You just need to be able to keep a beat and count to 4 and we'll help you do the rest!*

### **The Bethany Brass—Wednesday, September 12, 7:00-8:15 p.m.**

A brass ensemble open to both youth and adults. This group also divides into special smaller ensemble (trios, duets, quartets.) during the year.

Interested in joining a group? Just contact Cantor Magness ([PMagness@bethanylcs.org](mailto:PMagness@bethanylcs.org) or 630.355.2198, x. 227). Feel free also to inquire also about *Veritas* (a contemporary liturgical ensemble), *Youth Ensemble* (our high school group), and our flute choir.



# Issues, Etc.™

Christ-Centered Cross-Focused Talk Radio

CHRIST-CENTERED, CROSS-FOCUSED TALK RADIO.....You can listen to in-depth discussions on topics like Christian Zionism, Christian Narcissism, The Lord's Prayer, Health Care Reform & Abortion, Johann Sebastian Bach and more. Issues, Etc. is a radio talk show produced by Lutheran Public Radio and hosted by LCMS Pastor Todd Wilken. You can listen to what you want when you want at [www.issuesetc.org](http://www.issuesetc.org).

## Pictorial Directory is Coming this Fall



Bethany is planning a new Pictorial Directory this fall. We have reserved November 17/21, November

23/24 and 27/28 for picture taking. If you are planning a family photo for a gift, we have been guaranteed delivery for Christmas. Watch upcoming News & Notes for more information.

## AMAZING GRACE—You Can Make a Difference!

It is amazing how many children have learned about the love and forgiveness of Jesus at Grace Lutheran School located in the Little Village neighborhood of Chicago. You can help the boys and girls at Grace even though Bethany is about an hour away. As you come across all of the "Back-to-School" sales in the coming weeks, pick up some school supplies for Grace students, and deposit them into the tub provided outside the school office. We would like to be able to deliver school supplies and the first quarter chapel offerings from BLS as we encourage our brothers and sisters in Christ.

## Attention All Ushers!

Let's spice up your dog days of summer! We are having a training session on **Sunday, August 16 at 10 a.m. between church services**. This will be practical training on new handouts for children, what to do for baptisms, safety procedures and promoting Christian piety. Please make every effort to come and get this important training. A well-trained staff is a staff that can do a good job. For questions or comments talk to Chuck Guebert. See you there!

## Bethany to Host Concordia Theological Seminary Recruitment Trip



ME, A PASTOR? If you have found yourself asking this question or have ever considered studying to be a pastor, now is the time to do something about it! Rev.

Tom Zimmerman of Concordia Theological Seminary, Fort Wayne, Indiana is going to be at Bethany on **Wednesday, August 26, 2009 from 4:00 to 8:00 p.m.** Come and explore the possibility of entering the ministry. Men of all ages are invited, as are their wives, children or fiancées. Some individual appointments are also available 9:00 a.m. to 2:00 p.m. in the west suburban area on August 25 and 27. Call Rev. Tom Zimmerman with questions (1-800-481-2155, 260-452-2278 or 260-402-1024) or email at [thomas.zimmerman@ctsfw.edu](mailto:thomas.zimmerman@ctsfw.edu).

## 55 Plus is going to the Annual Senior Expo

Bethany received ten tickets for the 14th Annual Senior Expo to be held on Wednesday, September 2, 9:00 a.m. to 2:00 p.m. at Drury Lane in Oakbrook, Illinois.

The Expo is an informative event and will be a fun group outing all under one roof. We will go in the church van and we will decide on the time we will leave and return when we see how many seniors are interested. Call Luella Placko (630-983-2985) if you would like to attend. Join us for this great outing!

## Mark These Events on your Calendar!

The Bethany Lutheran Church and School calendar is full of upcoming events for our entire church family. Here are some dates to note:

- Sunday, August 16 at **10 a.m.**—Usher Meeting and from **3 to 5 p.m.** LWML Working Meeting.
- Monday, August 17 at **6 p.m.**—BLS New Family Orientation & Welcome Back Ice Cream Social.
- Thursday, August 20—BLS Registration Day (**9-11 a.m. and 6-7 p.m.**).
- Monday, August 24—BLS First Day of School.
- Sunday, August 30—Sunday School Rally Day at **10 a.m.** during the Bible Study hour.
- Sunday, August 30—Church and School Picnic after the **11:15 a.m.** service.
- Tuesday, September 8 at **7 p.m.**—Voters Meeting.
- Sunday, September 20—Faith Sings LCFS Hymn Festival.

## Pastor Rossow

### “Going Behind Bars” Please Help to “Bail Him Out”!



On Wednesday, August 5 Pastor Rossow will be participating the the Muscular Dystrophy Association fundraiser by spending part of the afternoon in “jail”. A goal has been set to raise \$2,400 as his bail. You can help to “spring” your pastor by going to <https://www.joinmda.org/catch3509/trossow/> Thanks in advance to any members who want to participate in this fun and worthwhile effort. (P.S. Jail is actually Catch 35 Restaurant in Naperville :-)

## You’re Invited—To the LWML

Do you wonder what LWML means or what they do? The Lutheran Women’s Missionary League is the women’s auxiliary of the LCMS. Thousands of women have met for convention for over 65 years in love, fellowship and joint service to help spread the Gospel through their mite contributions and prayers. The goal is to provide for the practical needs of missionary projects throughout the globe. In addition, women are personally involved in missions. One such opportunity will be offered here at Bethany on August 16 from 3 to 5 p.m. You are invited to come and rip sheets into strips and roll them into bandages. These will be sent to Africa to be used in areas where commercial bandages are in short supply.

If you have any old WHITE sheets to donate, please wash them again and bring them to the meeting. We also have a wood-working project your may enjoy doing with your children as a summer activity.

Ladies, both young and old, consider finding out more about the LWML by coming to this work-meeting and to enjoy fun and fellowship as well!

For more information and to RSVP contact Ina Johnson (630-369-6074) [muttiina@gmail.com](mailto:muttiina@gmail.com) or Barb Etter (630-420-0626) [barbetter@comcast.net](mailto:barbetter@comcast.net) for more information.

## Bethany Staff

### Program Staff

Rev. Timothy Rossow.....Pastor (Team Leader, Administration)  
 Rev. Stephen Schumacher.....Pastor (Evangelism, Assimilation)  
 Pam Mueller.....School Principal  
 Phillip Magness.....Cantor  
 vacant.....Director of Youth and Young Adult Ministries  
 Valerie Buckland.....Deaconess Intern

### Faculty

Louise Bolt.....Pre-Kindergarten  
 Jennifer Gutzwiller.....Pre-Kindergarten  
 Aimee Walsh.....Pre-Kindergarten/Kindergarten  
 Cynthia Niccolai.....Kindergarten  
 Marnie Esposito.....Kindergarten Aide  
 Erin Thompson.....First Grade  
 Sharon Lenich.....First Grade Aide  
 Charlene Fiene.....Second Grade  
 Kirk Bolt.....Third Grade  
 Chad Baganz.....Fourth Grade  
 Erin Dunwell.....Fifth Grade  
 Terry Dierking.....Math/Instructional Aide  
 Nancy Yendrejczyk.....Library/Instructional Aide  
 Angelina McKissick.....PreK-6th Phys. Ed.  
 Michelle Stehle.....Sixth Grade  
 Rob Johnson.....Seventh Grade  
 Glenn Sonlitner.....Eighth Grade  
 Holly Spooner.....Special Education  
 Carole Staunch.....Art  
 Mike Vasilie.....Band Director  
 Erin Dunwell.....Athletic Director

### Administrative/Support Staff

Angie Blaesner.....Finance Administrator  
 Laurie Cade.....School Administrator  
 Donna Linnemeyer.....Program Administrator  
 Dennis Bartelt.....Printer  
 Georgia Bevente.....Nursery Coordinator  
 Susan Keller.....Associate Cantor  
 Deanne Lieb.....School Secretary  
 Trevor Magness.....Music/Worship Apprentice  
 Patty Pedigo.....Confirmation/Sunday School Coordinator/Yth Support  
 Phyllis Rossow.....Worship Secretary/Yth Support  
 Pam Splitt.....News & Notes Editor  
 Sandy Wischmeyer.....Evangelism/Membership Secretary

To e-mail any staff member: First initial of first name last name  
 @bethanylcs.org (ex. trossow@bethanylcs.org)

## Voters Board

Tom Mueller.....Chairman  
 Tye Fox.....Vice Chairman  
 Harry Novak.....Treasurer  
 Austin Eisemon.....Head of Board of Trustees  
 Shelly Quinn.....Head of Day School Policy Board  
 Don Lohrentz.....Head of Board of Elders  
 Elaine Gavin.....Recording Secretary  
 Pastor Rossow.....Pastor  
 Pastor Schumacher.....Pastor  
 Pam Mueller.....Principal

## Board of Elders

Don Lohrentz, Head Elder

Tim Benecke      Rob Johnson      Brad Perry  
 Gregg Berger      Phillip Magness      Chris Thilk  
                             Dennis Johnson  
 Pastor Rossow      Pastor Schumacher

## The Back Page

### Saturday and Sunday, August 8 & 9

Next week's readings: **1 Kings 19:1-8, Eph 4:17-5:2, John 6:35-51**

### Next week's services:

Saturday 08/08      5:00      Divine Service w/communion  
 Sunday 08/09      7:45      Service of the Word no/communion  
                             9:00      Divine Service w/communion  
                             11:15      Service of the Word no/communion

### Acolytes:

5:00      S Parr, D Parr  
 7:45      J Syers, M Patterson  
 9:00      A Quetsch, A Berger  
 11:15      C Collins, D Vertuno

### Building Opener:

C Guebert

### Altar Guild:

B Bartelt

### Communion Care:

7:45      B Christensen

11:15      Olson Family

### Sacristans:

7:45      G Sonlitner, J Burke

11:15      G Luehrsen, K Luhrs, D Groth, B Hanson

### Ushers:

Saturday 08/08      5:00      T Benecke, C Benecke, R Erickson, T Koopman

Sunday 08/09      7:45      R Witkowski, R Krachenfels, S Harris

9:00      D McKissick, T Lieb, B Hahn, E Gundersen,

B Gundersen, T Lieb

11:15      R Knosher, W Cade, C Prangley, J Wasson,

L Buntrock

### Greeters:

7:45      J & L Krachenfels

9:00      R & C Fiene

11:15      D & D Buckman

### Welcome Center:

5:00

7:45      B Lusk

9:00      W Schoen

11:15      S Wischmeyer

### Nursery:

(all Sunday Services)

Georgia Bevente

### Coffee Fellowship:

The deadline for the August 9 News & Notes is  
 Tuesday, August 4.

### Bethany Lutheran Church & School

1550 Modaff Road      Naperville, IL 60565  
 Church: (630) 355-2198      School: (630) 355-6607  
 www.bethanylcs.org

### Service Times

Saturday      5 p.m.  
 Sunday      7:45, 9:00, & 11:15 a.m.

**Communion**      1st & 3rd Sunday      7:45 & 11:15 a.m.  
**Schedule:**      2nd & 4th Sunday      5 p.m. & 9:00 a.m.  
                             5th Sunday      9:00 & 11:15 a.m.

**Nursery** The nursery is staffed by Georgia Bevente and volunteers on Sunday mornings. You are welcome to use it as a cry room at the 5 p.m. service.

**Adult Classes & Fellowship** In addition to our four worship services, Sunday morning classes are held weekly at 10:15 a.m. and are open to all members and friends. We enjoy coffee and fellowship before and during our study hour in the Parish Activity Center. All are welcome. **Sunday classes and coffee fellowship is on recess for the month of August.**